



IVY
AT INTERBAY

SEATTLE'S NEWEST HIDDEN GEM

Rest easy in your urban hideaway.

Every great Seattle neighborhood has an iconic space. A place to live and gather that sets the rhythm for the community. And right at the heart of Interbay is Ivy – a new story born at the end of a quiet cul de sac, across from Interbay Park.

Here, spaces are green, pets beg for belly rubs, and every amenity offers new ideas for your day. Rise and run at Discovery Park. Catch Elliott Bay sunsets from the rooftop. Spend nights in Ballard, because it's minutes away.

At Ivy, it's the best of both worlds. You can be close to all the action, and relax in style in your own peaceful urban oasis.





Landscaped
Courtyard



App-Controlled
Car Stackers



Bike Room



Community
Lounge



Rooftop Deck
& BBQ Station



Pet Friendly
Building



Controlled-access
Package Room



Fitness
Room

SEE AMENITIES



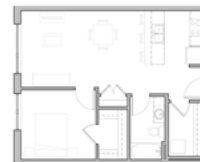
Studio

Spacious but efficient, this studio is the epitome of small living. Complete with a fully equipped kitchen, in-unit laundry, smart built-in storage, and ample living space makes for the perfect city retreat.



Open One Bedroom

Discover the perfect blend of space and modern style, with built-in conveniences like the urban mudroom and contemporary designer touches. Find your sanctuary in the separate sleeping alcove that brings a balance.



One Bedroom

A master chef's kitchen ready for crafting new dishes, an ample-sized walk-in closet for all the latest looks, and plenty of space to entertain friends.



One Bedroom + Den

Entertain your friends in the designer kitchen and take in the surrounding views with the large oversized windows. The den is the much desired extra space you've been yearning for.



One Bedroom Loft

Revel in the grandeur of this double height space complete with a large wall of windows. The private patio and interior details like exposed concrete columns and a powder-coated steel staircase make this loft feel like your own urban hideaway in the city.



Two Bedroom

Impress your friends in the large open kitchen and living room, complete with stunning designer finishes. At the end of the day, find your reprieve in the master bedroom with large walk-in closet and en suite bathroom.

SEE AVAILABILITY

Interbay is the Perfect Urban Oasis.

Ivy is perfectly situated for wherever you want to go, however you want to get there!

Nestled between the Magnolia Bridge and Ballard's Salmon Bay, the Interbay neighborhood is strategically placed right off a main arterial that carries you quickly to downtown, or provides easy access to northern neighborhoods like Ballard, Fremont, and Wallingford. Ivy is positioned directly across from Interbay Athletic Field and next door to the Interbay Golf Complex making it an ideal spot for green views and relaxed vibes.

[EXPLORE RECREATION](#)

[SEE NEIGHBORHOOD](#)



RESTAURANTS

1. Red Mill Burgers
2. Mighty-O Donuts
3. Pagliacci Pizza
4. Maggie Bluffs
5. Salt & Straw Ice Cream

GROCERY

6. QFC
7. Trader Joe's
8. Whole Foods Market
9. Metropolitan Market
10. Amazon Fresh Pickup

BEER & WINE

11. Aslan Brewing
12. Rooftop Brewing
13. Reubens Brews
14. Peddler Brewing
15. Stoup Brewing

PARKS & RECREATION

16. Golden Gardens
17. Ballard Farmer's Market
18. Interbay Golf Center
19. Discovery Park
20. Gasworks Park

ATTRACTIONS

21. Ballard Ave
22. Olympic Sculpture Park
23. Space Needle
24. Fremont Troll
25. Ballard Locks

